



Introduction

This manual contains complete documentation for FabFilter One in printer-friendly format. All information in this manual is also accessible via the Help button in FabFilter One's user interface.

[Table of contents](#)

Table of Contents

Introduction	
About FabFilter One	3
Key features	4
Quick start	5
Using FabFilter One	
Overview	6
Knobs and switches	7
Oscillator	8
Filter	9
Envelope generator	10
Modulation basics	11
Modulation: I can't stop	13
MIDI Learn	14
Undo and redo	15
Stand-alone (Windows)	16
Stand-alone (Mac)	17
How To Create	
Creating sounds	18
Bass sounds	19
Lead sounds	20
Drums sounds	21
Sounds effects	22
Presets	
Loading presets	23
Saving presets	24
How presets are stored	25
Purchasing FabFilter One	
Purchasing FabFilter One	26
Entering your license key	27
Support	
Support	28
Manual installation	29
MIDI controller messages	30
License agreement	31
About FabFilter	32

About FabFilter One

In the last few years, more and more people have started to use software synthesizers, software samplers and effect plug-ins instead of good old hardware. However, it seems almost impossible to recreate those fat, warm-sounding analog synths and effects in digital form. Many companies have tried and failed, giving their plugins vintage-look interfaces, tons of features, and crappy effects, diverting you from the real issue: the sound.

FabFilter does things differently. We don't compromise on sound quality and ease of use. We give you the tools you need to create your music. After years of intensive research and development, we present our first product: FabFilter One.

FabFilter One is a simple yet awesome sounding synthesizer, based on analog classics like the Korg MS-10. It has the [fattest filter](#) you've ever heard in a digital synth. And we've invested lots of time in the little things that make all the difference: smooth and sexy [portamento](#), perfectly fine-tuned [knobs](#) and interpolation algorithms that are responsive and smooth at the same time.

Of course, the FabFilter One also supports everything you've come to expect from modern plugins, like an extensive [preset system](#), sample accurate parameter changes, and a complete [MIDI interface](#) with MIDI Learn.

FabFilter One is available in VST, VST3, AU, RTAS and AAX formats for Mac OS X and Windows.

Windows requirements:

32-bit: Windows 7, Vista or XP

64-bit: Windows 7 or Vista (x64)

VST 2/3 host or Pro Tools

SSE-capable processor

Mac OS X requirements:

32-bit: OS X 10.4 or higher

64-bit: OS X 10.6 or higher

AU or VST 2/3 host or Pro Tools

Intel or G4/G5 processor

Next: [Key features](#)

See Also

[Quick Start](#)

[Using FabFilter One](#)

Key features

FabFilter One stands out on many points:

- **Best cut-off filter**
We have put tremendous effort in creating the best [cut-off filter](#) ever. No useless features and options here: it's just the fattest and smoothest self-oscillating digital filter you've ever heard. Its sound is inspired by the analog Korg MS-series from the late seventies: raw but never cheap, going crazy with high peak values, but never over the top. Even at full resonance, there are none of the zippy digital artefacts that are so common among other plugin filters.
- **Great oscillator**
The [oscillator](#) sounds strong, pure, and clean. Again, we've invested a lot of time to get just the right analog feel, custom-shaping the waveforms and fine-tuning the sound. You get pure fatness in the low regions and total clarity in the high regions! There are extensive pulse width modulation options and it's also possible to mix white or pink noise into the signal, which is great for percussive sounds.
- **Smoothest portamento**
Most synthesizers just slide from one note to another without giving it another thought. We understand that [good portamento](#) is one of those things that give your play just that little bit extra. Good portamento is magic. So we've fine-tuned it until it was just right, and added polyphony support as well. Feel it yourself!
- **Smart parameter interpolation**
Parameter changes are interpolated by smart algorithms, ensuring both responsiveness and smooth transitions without clicks or 'zipper' effects. This is especially important with [MIDI controller](#) changes.
- **Polyphony and velocity sensitivity**
FabFilter One now supports 10-voice polyphony, volume and filter velocity sensitivity, and filter keyboard tracking. As an extra bonus, the [modulation generator](#) can now also be synchronized to the plug-in host.
- **Straightforward user interface**
The user interface is simple, modern, and easy to use. The [knobs](#) are large and can be dragged up and down as well as turned around for precise adjustments. You can tweak and tune your sounds to your hearts' content without having to hunt for impossible little knobs and sliders.
- **Presets**
FabFilter One comes with a standard set of dozens of great sounds and enables you to create and save your own [presets](#). You can share your sounds with other FabFilter One users and the preset files are the same in the Mac OS X and Windows versions.
- **Sample accuracy and high sample rates**
Naturally, the FabFilter One plug-in handles all parameter changes at sample accuracy and it can be used with arbitrary sample rates.

Next: [Quick start](#)

See Also

[Quick Start](#)

[Using FabFilter One](#)

Quick start

The installer will copy the FabFilter One plug-in into the common VST, VST 3, AU (OS X only) and Pro Tools plug-in folders on your computer. On Mac OS X, the global plug-in folders in /Library/Audio/Plug-Ins are used.

In most cases, your host will then recognize the plugin automatically. However, if the instructions below do not work, see [Manual installation](#) instead.

- Cubase
Choose an empty insert slot, for example in the Mixer, and select FabFilter One from the menu that appears. To use the MIDI features in One, create a new MIDI track and set its output to the One instance you have just created. (The VST 3 version of One can be found in the Instruments section.)
- Logic Pro
Choose an empty insert slot on one of your audio tracks, instrument tracks or buses and select FabFilter One from the pop-up menu. You will find FabFilter One in the *Audio Units* -> *FabFilter* section (named FF One).
- Ableton Live
In Session view, select the track you would like to place FabFilter One on, for example by clicking the track name. At the left top of Ableton Live's interface, click on the Plug-in Device Browser icon (third icon from the top). From the plug-ins list, double-click FabFilter/FabFilter One, or drag it onto the track.
- Pro Tools
Choose an empty insert slot on one of your audio tracks, instrument tracks or buses and select FabFilter One from the pop-up menu in the Instruments section.

Use the Presets button at the top of the plug-in interface to try different settings from the many factory presets that are bundled with FabFilter One. Have fun!

Next: [FabFilter One overview](#)

See Also

[Overview](#)

[Loading presets](#)

Overview

The FabFilter One interface is divided into several sections, somewhat like the front panel of a traditional analogue synthesizer.



- **Oscillator**
The [oscillator](#) is the heart of the synthesizer, producing the raw tones that are modified by the other components. It also contains portamento, additional noise settings and settings that control the amount of frequency modulation by the [modulation generator](#) and [envelope generator](#).
- **Filter**
The [filter](#) alters the tones from the oscillator to make them warmer and less harsh. Like a true analogue filter, it can easily be driven to self-oscillation to create completely distorted sounds, or a warm lead with a little raw edge. The filter section also contains settings that control the amount of frequency modulation by the modulation generator and [envelope generator](#).
- **Envelope generator**
The final touch and feel of the sound is defined by the [envelope generator](#). Tweak the various settings here to create anything between short percussive hits to long reverberating effects.
- **Modulation generator**
The [modulation generator](#) generates a low-frequency square or triangle wave that can be used to modulate both the frequency of the oscillator and the cut-off frequency of the filter. This is where the fun starts!
- **Additional features**
This section contains a few useful extras. You can choose between monophonic and polyphonic (10-voice) mode, set the type of pulse width modulation, set the amount of filter keyboard tracking and set the amount of keyboard velocity modulation for the volume and the filter cut-off frequency.
- **Presets**
With the preset button, you can easily browse through the factory presets or save your own sounds so you can re-use them in other songs. See [Presets](#).

Next: [Knobs and switches](#)

See Also

[Quick start](#)

[Creating sounds](#)

Knobs

It is easy to control FabFilter One's parameters with the large round knobs. They will light up when you move the mouse cursor around to indicate that you can adjust them. The moment you move the mouse cursor over a knob, a parameter value display will pop up, which shows the name and the current value of the parameter.



All knobs support four ways of control:

1. Vertical mode
Click on the center area of a knob and drag up or down to rotate it. The knob reacts to the speed with which you are dragging, so if you move the mouse slowly, you make precise adjustments.
2. Rotate mode
Grab the arrow of the knob and drag it around. By moving the mouse cursor further away from the knob while dragging it, you can make precise adjustments.
3. Mouse wheel mode
Perhaps the easiest way to make adjustments is by using the mouse wheel when you hover over a knob. This mode works for all the knobs and possible panning rings. (On Windows, you might need to click in the plug-in interface first to make sure it is the active window.)
4. Text entry mode
Double-click on a knob to enter the value exactly using the keyboard.

Tips

- To reset a knob to its default position, hold down the *Ctrl* key (Windows) or *Command* key (Mac OS X) and click the knob once.
- To fine-tune a value when using vertical drag mode or the mouse wheel, hold down the *Shift* key while dragging or moving the mouse wheel.
- In text entry mode, there are several handy shortcuts. With frequency values, you can type e.g. '1k' to set the value to 1000 Hz. With dB values, you can type e.g. '2x' to get +6 dB (the value that corresponds to two times louder). With all values, you can also type a percentage (e.g. '50%' will put a knob exactly in the middle position).
- Pro Tools note: the RTAS/AS and AAX versions of our plug-ins implement the default Pro Tools keyboard shortcuts for fine tune (*Ctrl*+drag on Windows, *Command*+drag on Mac OS X) and reset to default (*Alt*+click).
- Sometimes, knobs in our plug-in interfaces are linked: these be adjusted simultaneously by holding down the *Alt* key while dragging on one of them. For example, an output level and input level setting of a plug-in could be adjusted simultaneously (in the opposite direction) this way.

Next: [Oscillator](#)

See Also
[Overview](#)

Oscillator

At the heart of the synthesizer, the oscillator produces the raw tones that are later modified by other components, such as the filter and the envelope generator.



You control the oscillator with the following settings:

- **Wave Form**
Selects the wave form that the oscillator produces: triangle (a soft, warm tone), sawtooth (a sharp bright tone that is ideal for filtering), square (a more metallic sound, adjustable with the pulse width setting), and white noise (which is great for percussive sounds and effects).
- **PW/PWM**
Adjusts the pulse width of the square wave form, from an even square to an infinitely thin pulse (which is inaudible). In combination with the Pulse Width Modulation switch in the Patching Features section, this knob also adjusts the amount of pulse width modulation. See [Modulation: I can't stop](#).
- **Scale**
Transposes the tones that are produced by the oscillator by full octaves. The oscillator produces rich bass tones at the 32' position and high whistles at 4'. The 16' and 8' settings are good for lead sounds.
- **Pitch**
Slightly detunes the oscillator, which can be necessary if you want to play along with a record, or with live instruments. To reset this setting, hold down Ctrl and click the Pitch knob once.
- **Portamento**
Adjusts the amount of portamento or glide, which makes the oscillator slide from one note to another. A little portamento is great for smooth keyboard solos, or when playing large bass intervals. The portamento feature in FabFilter One is unique because it also works in polyphonic mode, so you can play sliding chords!
- **Noise**
Adds extra noise to the oscillator signal. Use the Noise Type switch at the bottom to choose between white and pink noise. A small amount of noise makes instruments sound more natural, and you can create thundering sound effects with lots of pink noise. (Try the Pink Noise preset in the Basic submenu for a good starting point.)

Next: [Filter](#)

See Also
[Overview](#)

Filter

The 12 dB/octave low-pass filter is one of the most important components in the synthesizer. Especially when using the modulation features, it is the key to creating great sounds.



The Frequency knob adjusts the cut-off frequency. Basically, all sounds below the cut-off frequency will go through the filter, but sounds with higher frequencies are damped. At position 10, the cut-off frequency is far above 20 kHz and therefore the filter will allow all frequencies to go through unchanged. At position 0, the cut-off frequency is just a few Hz and the filter will block almost all sound from the oscillator.

The wave forms produced by the oscillator contain many harmonics: high frequencies that are multiples of the fundamental tone. Therefore, they sound bright and a little harsh. By turning the Frequency knob to the left, you reduce the number of harmonics to change the character of the wave forms and create warmer sounds.

The Peak knob adjusts the filter resonance. A little resonance will cause the filter to create warmer and more characteristic tones. Around position 8, the filter starts to self-oscillate at the cut-off frequency which creates terrific effects in combination with the sound from the oscillator. At these high peak values, the filter produces deep, ringing bass tones if you set the Frequency knob around position 3 or 4.

We've carefully tuned the filter to avoid the whistles and other digital artefacts that are common with other digital filters when you change the cut-off frequency at maximum resonance. Our filter sounds crazy but never over the top!

You can modulate filter cut-off frequency with the modulation generator (the MG knob), the [envelope generator](#) (the EG knob), and with keyboard velocity. Read the [modulation basics](#) section to learn more about the modulation features of the FabFilter One.

Next: [Envelope generator](#)

See Also

[Modulation basics](#)

[Overview](#)

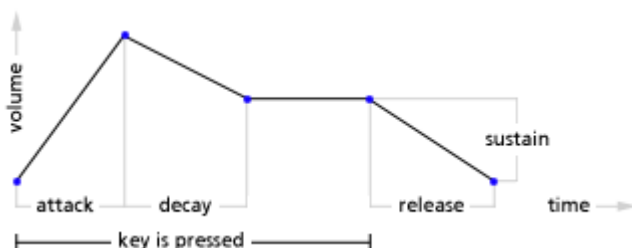
Envelope generator

The envelope generator changes the volume of the sound dynamically when you press and release keys. It shapes your sounds, adjusting the timbre and release. It's also frequently used to modulate the filter for dynamically changing sounds.



- **Hold**
Sets the extra time that a key appears to be held down after you have released it. After releasing a key, the envelope generator pretends it is still down for the duration of the hold time. This enables you to press new keys while the previous note is still playing.
- **Attack**
Sets the attack time, which controls how long it takes for the volume to increase when you press a key. The volume always increases from zero to the maximum value. Set this to 0 for staccato instruments and drums. Use larger values for more natural sounds, such as flutes and pads.
- **Decay**
Sets the decay time, which controls how long it takes for the volume to decrease after the maximum value has been reached at the end of the attack stage. The volume always decreases from the maximum value to the sustain level. The effect of the decay setting depends on the sustain level. With a low sustain level and short attack and decay times, the envelope generator produces a sharp tick whenever you press a key. With the sustain level at its maximum, the volume does not decrease at all, so the decay setting has no effect.
- **Sustain**
Sets the sustain level: the volume that is produced when both the attack and decay stages are over, but the key is still held down. If you want a sharp attack (especially when you also use the envelope generator to [modulate the filter](#)), you have to use a low sustain level. If you set the sustain level to 0, the sound will be inaudible after the attack and decay stages, which is often useful for drums and percussion.
- **Release**
Sets the release time, which controls how long it takes for the volume to decrease from the current level to zero when you release a key and the hold time has elapsed. When playing the synthesizer live, it's often nice to have a little longer release time because this gives you time to play a new note while the current note still fades away.

This diagram illustrates the stages that the envelope generator goes through when you press and release a key:



Tips

- When you work with short attack, decay, and release times, it's often easier to adjust the knobs using the rotational drag mode. To do this, drag the knob arrow around, and move the mouse cursor further away from the knob for more precise adjustments.
- If you use a short decay time, a low sustain level, and a long release time and a key is released when the envelope generator is not yet in the sustain stage, it enters the release stage immediately which can cause the sound to last much longer. Although this can be a nice effect, you can avoid it by choosing a larger hold time.

Next: [Modulation basics](#)

See Also
[Overview](#)

Modulation basics

So far, we've discussed how to use the oscillator, the filter, and the envelope generator to create basic sounds. To make things more interesting, you can also let the synthesizer adjust the oscillator frequency and the filter cut-off frequency dynamically while playing a sound. This is called modulation.



You can modulate the oscillator frequency and filter cut-off frequency with the modulation generator and the [envelope generator](#). The filter cut-off frequency can also be modulated by velocity.

The modulation generator generates a low-frequency square or triangle wave. Use this to adjust the [oscillator](#) frequency and the [filter](#) cut-off frequency periodically. The amount of modulation is controlled with the MG knobs. The modulation generator contains the following settings:

- Wave form
Adjusts the balance between rising and falling ramps in the wave form. To reset the balance, hold down the Ctrl key and click the knob once.
- Sync mode
Chooses between arbitrary frequency settings and synchronizing with the tempo and song position of the plug-in host.
- Frequency / Sync type
Sets the speed of the wave form that is produced by the modulation generator. When synchronized to the host's tempo and position (the closed lock symbol), you can choose a 'frequency' in bars, between 16 bars and 1/64 bar. Otherwise, you can set an arbitrary frequency. When set to 0, very slow ramps are produced that can for example be used with white noise to imitate ocean waves rolling in.

You can also switch between square waves and triangle waves. Triangle waves are good to slowly change the filter cut-off frequency or to simulate a car siren. The square wave form is very useful to repeatedly switch between two different tones. With the frequency modulation MG knob, you can tune the two tones to be exactly one octave apart, for example.

The envelope generator enables you to modulate the sound dynamically while you press and release keys. The amount of modulation is controlled with the EG knobs. Modulating the filter cut-off frequency with the envelope generator is essential for creating percussive attack effects and simulating real instruments.

When the envelope generator is in its sustain stage, it has no effect as a modulator. In the attack or decay stage, it increases the oscillator or cut-off frequency; in the release stage, it decreases the frequency. It depends on the EG knobs how much the frequency is changed.

Tips

- Set the modulation generator to a moderate frequency and turn the frequency modulation MG knob slightly to create a tremolo effect. The modulation wheel on your keyboard will also have this effect.
- Set the modulation generator to a low frequency and turn up filter modulation MG knob to make sounds livelier by changing the timbre dynamically.
- In the envelope generator, set short attack and decay times and use a low sustain level. In the filter, set the cut-off frequency to about 5 and then turn up the filter modulation EG knob while pressing different keys. Also try increasing the peak value for more pronounced attack effects.
- In the filter, set the cut-off frequency to 3 and the peak to 10. In the envelope generator, set attack to 0, decay and release to 1, and sustain to 8. Now turn up the filter modulation EG knob to about 6. This will create a solid bass drum (it's best with [white noise](#)). Experiment with different sustain levels and cut-off frequency values. See also [Creating drums](#).

Next: [Modulation: I can't stop](#)

See Also

[Envelope generator](#)

[Filter](#)

[Oscillator](#)

[Overview](#)

Modulation: I can't stop



We just can't get enough of those [modulation](#) tricks, so we've added a few extra gadgets.

The Pulse Width Modulation switch is only effective if the [oscillator](#) wave form is set to square, so be sure to do that first. It changes the meaning of the PW/PWM knob in the oscillator section. You've probably noticed that it sounds funny to turn that knob quickly, so why not modulate it? We've come up with the following options:

- Off
This is the default setting. In this case, the PW/PWM knob just sets the pulse width of the square wave form.
- MG
With this setting, the PW/PWM knob adjusts the amount of pulse width modulation by the modulation generator. If you set the modulation generator to triangle waves, this creates a quite nasty sound. With square wave modulation, the oscillator periodically switches between two different pulse width values.
- EG Normal
With this setting, the PW/PWM knob sets the amount of pulse width modulation by the envelope generator. Because the envelope generator increases the pulse width setting during the attack phase, the sound actually gets thinner during attack, and thicker during release. This may or may not be what you're after.
- EG Inverted
In this case, the PW/PWM knob sets the amount of pulse width modulation by the inverted envelope generator signal. This creates thicker sounds during attack/decay, and thinner sound during release, which sounds more natural. Our favorite choice.

When modulating the pulse width, it's often better not to turn the PW/PWM knob all the way to the right, because that will mute the square wave at some point. Just leave it at 8 or 9 (unless you like that, of course).

The Frequency Mod EG switch at the bottom of the [oscillator](#) section and Filter Mod EG switch at the bottom of the [filter](#) section invert the envelope generator signal before it is used to modulate the oscillator frequency or the filter cut-off frequency. You can sometimes use this to create unusual effects.

The Keyboard Velocity settings change the amount with which the keyboard velocity modulates the volume and the filter cut-off frequency. If the volume knob is set to 0, a tone will always sound at maximum volume.

Next: [MIDI Learn](#)

See Also

[Modulation basics](#)

[Envelope generator](#)

[Overview](#)

MIDI Learn

Controlling FabFilter One's parameters directly with MIDI is very easy using the MIDI Learn feature. With MIDI Learn, you can associate any MIDI controller with any parameter.



Click the MIDI Learn button in the bottom bar to enter MIDI Learn mode. The interface dims and the parameters that can be controlled are highlighted. Each parameter has a small text balloon that displays the associated controller number. Now do the following to associate a controller number with a parameter:

1. Touch the control of the desired parameter in the interface that you wish to control. A red square will mark the chosen parameter.
2. Adjust the slider or knob on your MIDI keyboard or MIDI controller that you want to associate with that parameter.

That's it! The parameter will now be controlled with the MIDI controller. You can now go back to step 1 to associate a different parameter. Note that there is no warning when you associate a different knob with a controller number that is already used. It will just be replaced.

To exit MIDI Learn mode, click the MIDI Learn button again, or click Close at the top of the interface.

Click the small menu drop-down button next to the MIDI Learn button to access the MIDI Learn menu:

- **Disable/Enable MIDI**
This globally turns MIDI control of parameters on or off: useful in hosts that automatically send all MIDI events on a track to all effect plug-ins associated with that track as well.
- **Clear**
This submenu shows all parameter associations and lets you delete individual associations or clear all associations in one step.
- **Revert**
Reverts to the last saved MIDI mapping (or the state when the plug-in was started).
- **Save**
Saves the current MIDI mapping so Revert will go back to this state. The current mapping is automatically saved when closing the plug-in.

Next: [Undo and redo](#)

See Also
[Overview](#)

Undo and redo

The Undo and Redo buttons at the top of the FabFilter One interface enable you to easily undo changes you made to the plug-in.



- The Undo button at the left will undo the last change. Every change to the plug-in (such as dragging a knob or selecting a new preset) creates a new state in the undo history. The Undo button steps back through the history to restore the previous states of the plug-in.
- The Redo button cancels the last undo command. It steps forward through the history until you are back at the most recent plug-in state.

Notes

- If the plug-in parameters are changed without using the plug-in interface, for example with MIDI or automation, no new undo states are recorded.
- The Undo and Redo buttons will disable themselves if there is nothing to undo or redo.

Next: [Stand-alone \(Windows\)](#)

See Also
[Overview](#)

Stand-alone (Windows)

Although FabFilter One is often more useful as a [VST, Audio Units or RTAS plug-in](#) because you can combine it with other instruments, you can also run it as a stand-alone application in Windows. To start the stand-alone version, click Start, Programs, and then click FabFilter One.

Note: On 64-bit Windows, you need to install the 32-bit version of FabFilter One as well to be able to use the stand-alone version. It is not included in the 64-bit installer.

The Windows stand-alone version looks just like the plugin, but it adds a small Options button next to the Preset button to configure the input and output settings. Click it to bring up the Options dialog.



- **Driver Type**
The stand-alone version can use either ASIO or DirectX drivers, when you select an ASIO driver, an options button will appear. The driver-specific options dialog will let you specify buffer size settings.
- **Buffer Size**
Selects the size of the playback buffer in samples. Smaller buffers give less latency and a faster response, but they can also cause audible clicks and other playback problems. You should select the smallest buffer size that still works reliably.
- **Sample Rate**
Selects the desired sample rate in Hz. Some sample rates may not be supported by your sound card, in which case no audio will be played.
- **Midi In Port**
Selects the external MIDI input port that your MIDI keyboard is attached to.
- **Output Device**
Selects the sound card that will be used for playback. DirectX and ASIO sound cards are supported.

All changes will take effect immediately, so you can try different settings before closing the dialog. Click OK to make your changes permanent and close the dialog.

Next: [Stand-alone \(Mac\)](#)

See Also
[Support](#)
[Overview](#)

Stand-alone (Mac)

On Mac OS X, FabFilter One is also available as a stand-alone application via the Mac App Store.

The Mac stand-alone version of FabFilter One looks just like the plug-in version, except that it also contains an on-screen keyboard so you can also play it without a MIDI keyboard. You can toggle the keyboard with the Keyboard button on the toolbar. It is also possible to play using the regular computer keyboard, which simulates a piano keyboard on two rows beginning with the Q and Z keys.

Other keyboard shortcuts are *Cmd+Z* and *Cmd+Shift+Z* for Undo and Redo, and *arrow left/right* to skip presets.

Click the Preferences button to bring up the Preferences dialog, which contains the following settings:

- MIDI Input
Selects the external MIDI input port that your MIDI keyboard is attached to.
- Audio Output
Selects the CoreAudio sound device that will be used for playback.
- Sample Rate
Selects the desired sample rate in Hz. Some sample rates may not be supported by your audio device, in which case they will jump back to a setting that is available.
- Buffer Size
Selects the size of the playback buffer in samples. Smaller buffers give less latency and a faster response, but they can also cause audible clicks and other playback problems. You should select the smallest buffer size that still works reliably.

All changes will take effect immediately, so you can try different settings before closing the Preferences dialog.

Next: [Creating sounds](#)

See Also

[Support](#)
[Overview](#)

Creating Sounds

The FabFilter One comes with a solid library of great sounds, but the real fun starts with creating your own presets. However, just randomly turning some knobs won't help you to get closer to the sounds you have in mind.

The topics in this chapter will help you start creating your own sounds, explaining the best settings step by step. They're divided into the following categories:

- [Bass sounds](#)
- [Lead sounds](#)
- [Drum sounds](#)
- [Sound effects](#)

Next: [Creating bass sounds](#)

See Also

[Quick Start](#)

[Using FabFilter One](#)

Creating Bass Sounds

1. The Oscillator

For bass sounds, you can use any of the first three wave forms. Using triangle waves will result in deep, sine-like sounds, great for R&B and soul. Sawtooth waves will get you a more solid, defined sound, good for funk, techno and dance sounds as well as for emulating original bass guitar sounds. If you're trying to create an electro-like bass sound, the square wave form is just what you need.

2. The Envelope Generator

A good start for bass sounds as well as [lead sounds](#) is setting the attack, decay and release fairly low, the sustain value quite high and the hold time off, resulting in a 'snappy' envelope. When your sound needs to have a sharper attack, lower the sustain value.

3. The Cut-off Filter

Using the cut-off filter really is essential when creating bass sounds. To get warm and deep sounds, start with the frequency and peak values around position 5. For techno and dance sounds, turn the peak value up to get those freaky filter effects.

4. Modulation

One thing that definitely works great with bass sounds, is modulating the cut-off frequency using the envelope generator (the EG knob in the [filter section](#)). Slightly modulating it with the modulation generator (the MG knob) works quite well for moody, deep sounds.

5. The Finishing Touch

Adding a bit of portamento often works great for funky and analog-like sounds. Also adding just a little bit of pink or white noise can give good results in combination with the cut-off filter. It can be very worthwhile to experiment with the filter modulation EG value and with keyboard velocity modulation.

Next: [Creating Lead Sounds](#)

See Also

[Creating sounds](#)

[Using FabFilter One](#)

Creating Lead Sounds

One of the things that FabFilter One excels at is producing great lead synth sounds of any type. You can create anything from the smoothest seventies analog sounds to the hardest techno sounds.

1. The Oscillator

Especially the sawtooth and the square wave forms are suitable for lead synthesizer sounds. With the sawtooth wave form as a starting point, you can create smooth and soft lead sounds as well as more techno-oriented sounds. The square waveform is great for electro stuff.

2. The Envelope Generator

Most lead sounds use a fairly short attack, a short decay, a high sustain and a noticeable release. This will give your sound just that little bit of attack at the start and a good full sound while holding down a key.

3. The Cut-off Filter

Adjust the frequency and peak values to get the timbre that you're after. Modulating the cut-off filter is not essential when creating lead sounds. However, it can give your sounds that extra rawness and body they need, especially when modulating the cut-off frequency.

4. Modulation

Use the modulation generator to achieve great vibrato or tremolo effects by modulating the oscillator's frequency or the filter's cut-off frequency. It also works really well to use a bit of cut-off frequency modulation by the EG. When using the oscillator's square wave form, you can also modulate the pulse width using the [patching features](#). Modulating it with the EG or with the MG can both get you awesome results.

5. The Finishing Touch

One thing that will definitely give wonderful results with almost all your lead sounds, is FabFilter One's great and smooth [portamento](#). Even using it just a little bit really brings your sounds alive. Experiment with it!

To get those awesome raw seventies synth sounds, push your filter to the limit, using high peak values and combining different types of cut-off frequency modulation. Try changing the cut-off frequency while playing, to really adapt it to your play. (See [MIDI controller messages](#) to change the cut-off frequency with the slider on your keyboard.)

Next: [Creating Drum Sounds](#)

See Also

[Creating sounds](#)

[Using FabFilter One](#)

Creating Drum Sounds

FabFilter One can create a whole range of different percussive sounds, like bass drums, snares, toms and hihats. The keys to success are extreme peak values and modulating the cut-off frequency of the [filter](#).

1. The Oscillator

The wave form you need really depends on the type of drum sound you would like to create. For instance, tom sounds or snare sounds could use any of the first three waveforms (triangle, sawtooth or square). To get a good hihat or brush sound, the noise type would do the trick.

Creating bass drums works differently. Because great bass drum sounds heavily depend on the self-oscillation of the filter, you can experiment using any of the four wave forms. But the noise wave form usually gives the most solid results.

2. The Envelope Generator

Most drum sounds, like bass drums and snares, are short and have a really strong attack. To get this effect, you can set the attack (almost) to 0, use fairly short decay and low sustain values and use a short release. Especially with bass drum sounds, the sustain level can have a huge effect on the sound. Just experiment with this value in combination with the [filter modulation](#) to get the results you're after.

3. The Cut-off Filter

The cut-off filter really is the key component in the process of creating drum sounds, especially for bass drums. To create the fattest kick sounds, use the self-oscillation that occurs with the highest peak values, in combination with extreme cut-off frequency modulation by the envelope generator (turn up the EG knob in the [filter section](#)).

4. Modulation

As mentioned before, modulating the cut-off frequency with the EG is what you want to do here. For a good bass drum, start with maximum EG filter modulation and fine-tune if needed, adjusting the sustain value as well. For other percussive sounds, most of the time just a bit of EG modulation is enough.

5. The Finishing Touch

A great trick for giving snare drums that little extra kick, is adding some white or pink noise to the signal (using the oscillator's [noise knob](#) and noise type switch). Also inverting the EG cut-off frequency modulation can give great effects.

Try to experiment with the envelope generator, especially when creating bass drum sounds. For example, using higher release values and slightly higher sustain values will give you great results.

Next: [Creating Sound Effects](#)

See Also

[Creating sounds](#)

[Using FabFilter One](#)

Creating Sound Effects

For creating sound effects you can really exploit every option that FabFilter One offers you. Especially the modulation features can help you create the coolest sounds. Because sound effects can be very diverse, ranging from a storm sound to a raindrop, there is not one ideal initial setting that will help you on the way. To be able to create a sound effect that you have in mind from scratch, you should be comfortable with the various options that FabFilter One provides. To give you an idea how different effect sounds are created, we will discuss two basic [factory preset sounds](#).

In the explanations, the knob settings leading to the sound will be discussed. Knobs that are not mentioned are assumed to be set to their default value. You can quickly set all knobs to the default values by loading the Sawtooth preset from the Basic category.

Rain Drop

The first thing that comes to mind when you think of a rain drop, is that it sounds quite warm and 'round', somewhat like the sound of a sine wave. This indicates that a triangle is the best wave form to use. A rain drop sound is quite high, so a 4' scale setting would be good to start with.

- Set the oscillator wave form to triangle.
- Set the oscillator scale to 4'.

The second important thing that characterizes the sound is the fast rising frequency, starting low and ending very high. To obtain this effect, we need frequency modulation by the inverted envelope generator signal (the EG knob in the oscillator's [frequency modulation](#) section and the invert switch below it) in combination with a short envelope. A rain drop sound starts right away, so an attack value close to 0 should be used. To get the correct frequency modulation effect, short decay and release values are required.

- Set the EG knob in the frequency modulation section around value 9.
- Set the invert switch below the EG knob to 'inverted' (at the right-hand position).
- Set the attack almost to 0, the decay to 2, the sustain to 6 and the release to 2.5.

We now have that characteristic fast rising sound. However, it still needs some tweaking. To give the sound a little bit more body, we use the cut-off filter and some cut-off frequency modulation by the envelope generator (the EG knob in the [filter](#) section).

- Set the cut-off frequency to 4.
- Set the EG knob in the filter section to 10.

Storm

Many effect sounds use the oscillator's noise wave form. A storm sound is of course one of the best examples of such a noise-based sound. The oscillator produces white noise. This type of noise is a quite high, hissing sound. FabFilter One also offers the possibility to add white or pink noise to its signal (using the [noise knob](#) and the noise type switch below it). Pink noise has a more dark and rumbling feel. White noise mixed with a bit of pink noise would be just fine for our storm sound.

- Set the oscillator's wave form to noise.
- Set the noise knob to 3 and the noise type to pink.

A storm sound is characterized by slowly swelling and fading winds. This swelling effect can easily be achieved using the modulation generator at a low frequency to modulate the filter's cut-off frequency (the MG knob in the [filter modulation](#) section).

- Set the cut-off frequency to 6.5 and the peak to 5.5.
- Set the modulation generator's wave form type to triangle and frequency to 0 and wave form to its center position (a perfect triangle).
- Set the MG knob in the filter section to 4.

To get proper fade in and fade out effects for the storm sound, we use high attack and release values.

- Set the attack to 5 and the release to 6.

Next: [Loading presets](#)

See Also

[Creating sounds Using FabFilter One](#)

Loading presets

The included presets give a great overview of what you can do with FabFilter One. You can either use the presets as they are, or tweak them further to create your own unique sounds.

- To load a preset, click the preset button. The presets menu will appear with all available presets. Click a menu item to load that preset. The currently selected preset is highlighted with check marks.
- To explore the presets one by one, click on the little arrow buttons to the left and right of the main preset button. This will load the previous or next preset in the menu.

The preset button shows the name of the current preset. If you have changed the preset by adjusting one or more parameters, the name is dimmed to indicate that this is not the original preset anymore.

Tips

- The Default Setting preset is loaded automatically when FabFilter One is started. To change the default settings, simply overwrite this preset by clicking Options > Save As Default in the presets menu.
- If somehow the factory presets are lost or not installed properly, click Options > Restore Factory Presets in the preset menu to restore them.

MIDI Program Change and Bank Select

Loading a presets can also be done via MIDI, using Bank Select and Program Change messages. Click Options > View Bank/Program Numbers in the preset menu to enable or disable the display of bank/program numbers (for example: *(2/65) My Preset*). This means that you can load that preset by first sending a Bank Select message to select bank 2 and then sending a Program Change message to select program 65.

Important: All the presets in your preset folder are numbered automatically, starting with bank 0 and program 0. This way, you are able to access any of the presets via MIDI. However, this also means that when you add new presets to the menu, bank/program numbers of other presets might change. Be aware of this when recording program changes in a song!

Next: [Saving presets](#)

See Also

[Using FabFilter One](#)
[Creating sounds](#)

Saving presets

You can easily extend the included presets with new settings to build your own library of presets for FabFilter One that you can reuse in various projects. This is also a good way to copy settings across multiple instances of FabFilter One in a session.

To save the current setting as a preset, click the preset button, and then click *Save As*. A standard Save dialog will appear. Type a name for the new preset and click *Save* to finish.

In the Save dialog, you can also rename and delete existing presets and create a new folder to store presets in. New folders will show up as new categories in the preset menu. (On Mac OS X, this should be done with the Finder.)

See [How presets are stored](#) to determine the preset folder location and learn more about factory presets.

Next: [How presets are stored](#)

See Also

[Loading presets](#)

[Using FabFilter One](#)

How presets are stored

Presets for FabFilter One are stored in separate files with the .ffp extension (for FabFilter Preset). All presets reside in subfolders in the main preset folder. The subfolders will show up as separate categories in the preset menu. You can also further divide the subfolders into categories.

You can manage the preset files just like other files on your computer. The easiest way to do this is in the Save dialog that appears if you are saving a preset. The preset menu will automatically reload itself with the changes when the dialog is closed.

Furthermore it is very easy to share your newly created presets with other users since FabFilter presets use the same file format on both Windows and Mac OS X.

The default location of the main preset folder is *My Documents\FabFilter\One* for Windows, and *~/Library/Audio/Presets/FabFilter/FabFilter One* for Mac OS X. To change this location, first copy all presets to the desired new location, and then click Options > Change Preset Folder in the preset menu and select the new folder.

Restoring factory presets

If you have accidentally lost the factory presets, you can easily restore them by clicking Options > Restore Factory Presets in the preset menu. This will install all factory presets again.

Next: [Purchasing FabFilter One](#)

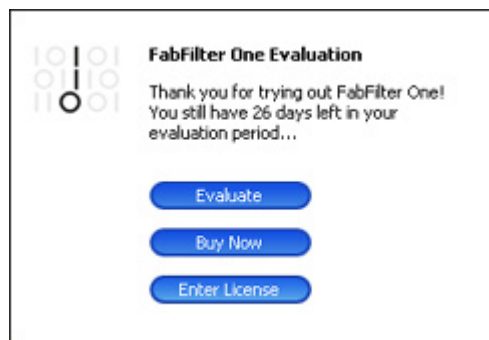
See Also

[Saving presets](#)

[Using FabFilter One](#)

Purchasing FabFilter One

Once you have downloaded and installed the evaluation copy of the FabFilter One, you may evaluate it during 30 days. Every time you start the plug-in, you will see the following dialog:




While there are still days left, you can click Evaluate to start working with the plugin. If you want to keep using FabFilter One after the evaluation period, you must buy a copy in the online FabFilter Shop by clicking the Buy Now button in the evaluation dialog.

- [Go to the FabFilter Shop and purchase FabFilter One now](#) 

We accept credit cards from all major companies, check payments, wire payments, and PayPal. The FabFilter Shop uses secure connections and encryption: therefore your personal information is completely safe.

Within a few minutes after you have purchased your copy, you will receive an e-mail containing your personal license key. You use this license key to turn the evaluation copy into a fully registered version without the evaluation dialog and the 30-day trial restriction.

Note: If the evaluation period has expired but you didn't have the chance to properly evaluate the plug-in, you can request a new evaluation period by contacting us at info@fabfilter.com .

Next: [Entering your license key](#)

See Also

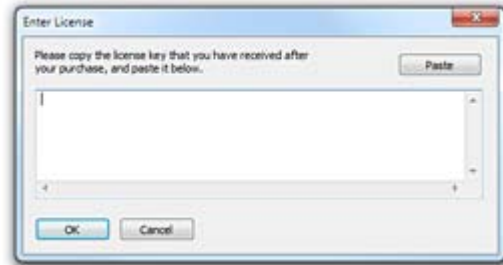
[Support](#)

[License agreement](#)

Entering your license key

After you have purchased FabFilter One in the online [FabFilter Shop](#), you will immediately receive an e-mail containing your personal license key. This license key will turn the evaluation version into a fully registered plug-in.

- Start FabFilter One and click Enter License in the evaluation dialog, or click Enter License on the Help menu if the plug-in is already running.
- Copy the license information from the e-mail you have received and paste it into the text field. Make sure that you are copying the entire license key including the *Product* and *Licensee* lines! If you are not sure what text to copy, just copy and paste the whole e-mail.



After you have entered your license information, you will need to restart the plug-in host, so make sure you save your settings if needed. From now on, you will be able to use FabFilter One for an unlimited period of time with full support via e-mail.

Tips

- After your purchase, you can always retrieve your license key again by logging into your [personal FabFilter account](#). Here you can also keep track of all your orders and take advantage of great discounts when buying other FabFilter plug-ins!
- To deauthorize your license key and remove it from the computer, click Deauthorize on the Help menu. If you temporarily needed to install your license on another computer, or if you have transferred your license to someone else, this is the way to deinstall your personal license key safely.

Next: [Support](#)

See Also

[Purchasing FabFilter One](#)

[Support](#)

[License agreement](#)

Support


If you need help with problems or questions, and the help file does not provide an answer, please visit the support pages on our web site.

- [Go to FabFilter Support](#) 

From here, you have direct access to the customer support forum, very useful tutorial videos for all FabFilter plug-ins, online and PDF versions of all our help files, and a section with extra downloads (such as presets, controller templates, older plug-in versions).

For sales questions and technical support, you can also contact FabFilter directly at info@fabfilter.com.

Reporting a bug

If you have encountered a bug in FabFilter One, first of all make sure that you are using the latest version of the plug-in, which you can find at www.fabfilter.com/download . You can check the version of your plug-in by opening an instance in your host, open the plug-ins help menu via the Help button at the right top of the interface, and choose About. If the bug is still present in the latest version, please send us an e-mail at info@fabfilter.com and include as much technical information as possible: operation system and version, host software and version, steps to reproduce the bug, etc. Thanks in advance!

Next: [Manual installation](#)

See Also

[Overview](#)

[About FabFilter](#)

Manual installation

When installing FabFilter One, the installation program will try to copy the plug-in into the appropriate plug-ins folders, and in most cases you host will recognize FabFilter One automatically. Otherwise, please follow these instructions:

Windows


On Windows, most hosts have their own VST plug-ins folder. So if you are using Windows and your host does not recognize FabFilter One, you need to locate the proper plug-ins folder for your host first (it is usually shown in the Preferences or similar dialog). Then, copy the file *FabFilter One.dll* from *C:\Program Files\FabFilter\One* (or *C:\Program Files (x86)\FabFilter\One* if you are using a 32-bit host on 64-bit Windows) to the plug-ins folder that you have found and restart the host so it can reload all its plug-ins. If you are using the RTAS or AAX version of One, copy the *FabFilter One.dpm* or *FabFilter One.aaxplugin* -and- *FabFilter One.dpm.rsr* files to the Pro Tools plug-in directory on your computer.

OS X

On OS X, plug-ins are installed in the standard plug-in folders in the system Library folder. These are the *only* possible correct locations:

- Audio Units: */Library/Audio/Plug-Ins/Components*
- VST/VST3: */Library/Audio/Plug-Ins/VST* and */Library/Audio/Plug-Ins/VST3*
- RTAS: */Library/Application Support/Digidesign/Plug-Ins*
- AAX: */Library/Application Support/Avid/Audio/Plug-Ins*

Note: AU and VST/VST3 plug-in may also be placed in the user's Library folders under *~/Library/Audio/Plug-Ins* as well.

If you still have problems, contact [FabFilter Support](#) .

Next: [MIDI CC table](#)

See Also

[Quick start](#)
[Support](#)

MIDI controller messages

All of FabFilter One's parameters can easily be controlled using MIDI. Here is a list of the default MIDI controller numbers that correspond to the parameters. You can use these controller numbers to control each parameter with the sliders on your MIDI keyboard or MIDI controller. Using the [MIDI Learn](#) feature, you can change and add CC number associations any way you like.

General

- 1 - modulation
- 7 - gain

Filter

- 74 - cutoff
- 71 - peak
- 26 - filter mod EG
- 88 - filter mod EG type
- 27 - filter mod MG

Oscillator

- 20 - scale
- 21 - waveform
- 22 - pitch/detune
- 23 - pulse width
- 85 - noise type
- 5 - portamento
- 24 - noise level
- 28 - frequency mod EG
- 87 - frequency mod EG type
- 29 - frequency mod MG

Envelope generator

- 69 - hold
- 73 - attack
- 75 - decay
- 79 - sustain
- 72 - release

Modulation generator

- 76 - modulation frequency
- 77 - modulation type
- 25 - modulation waveform
- 89 - sync mode
- 90 - sync type

Additional features

- 103 - polyphony
- 86 - pulse width modulation type
- 105 - filter keyboard track
- 104 - velocity volume
- 102 - velocity filter

Next: [License agreement](#)

See Also

[Support](#)

[MIDI Learn](#)

FabFilter Software License Agreement

1. Disclaimer

FABFILTER, FREDERIK SLIJKERMAN AND FLORIS KLINKERT, AUTHORS OF THIS FABFILTER PRODUCT, SPECIFICALLY DISCLAIM ALL WARRANTIES, EXPRESSED OR IMPLIED, INCLUDING BUT NOT LIMITED TO IMPLIED WARRANTIES OF MERCHANTABILITY AND FITNESS FOR A PARTICULAR PURPOSE. IN NO EVENT SHALL FABFILTER, FREDERIK SLIJKERMAN AND FLORIS KLINKERT, BE LIABLE FOR ANY DAMAGE A FABFILTER PRODUCT MAY CAUSE, INCLUDING BUT NOT LIMITED TO SPECIAL, INCIDENTAL, CONSEQUENTIAL OR OTHER DAMAGES.

2. Terms of Use

You may use an evaluation copy of this FabFilter product for an period of up to 30 days. Once the evaluation period has ended, you must either purchase your copy, or remove it from your computer. If you have purchased your copy of this FabFilter product, you may continue to use your evaluation copy beyond the end of the 30-day evaluation period until your license key arrives.

We encourage you to distribute the evaluation copy and give copies to friends, as long as there is no payment involved.

You may not reverse engineer, reverse compile, or disassemble any of the files in the distribution.

You are not allowed to distribute or copy the full version of any FabFilter product. The license key that you receive when purchasing it is personal and confidential and may not be disclosed. The full version is a commercial program. It is a violation of international copyright laws to give copies to other people. You may give them the evaluation copy, so they can purchase the program on their own.

3. VST plugin technology

VST is a trademark of Steinberg Soft- und Hardware GmbH.

Next: [About FabFilter](#)

See Also

[Purchase FabFilter One](#)
[Support](#)

About FabFilter

FabFilter Software Instruments was founded in 2002 by Frederik Slijkerman MSc and Floris Klinkert MSc, and is based in the center of Amsterdam in the Netherlands. In their roles as professional musicians and studio engineers, Floris Klinkert and Frederik Slijkerman have always loved the sound of old analog gear but also kept up with new software synthesis developments. However, none of the available software effects and instruments met their high quality standards.

Many plug-in developers try to emulate old analog gear, or stuff their plug-ins with as many features and (often mediocre) effects as possible, diverting you from the real issue: the sound. Both also being professional software engineers, Frederik Slijkerman and Floris Klinkert decided to do things differently and create the audio effects and instruments they dreamed of, resulting in the release of FabFilter One in early 2004, followed by FabFilter Volcano, Twin, Timeless, Simplon, Pro-C, Volcano 2, Twin 2, Timeless 2, Pro-Q, Micro, Pro-L and Pro-G.

To accomplish their goals, a lot of effort has been put into developing highly advanced filtering, EQ'ing and dynamics algorithms, superb digital oscillators, and highly innovative user interface solutions. The highly optimized FabFilter plug-in design results in very little CPU requirements. FabFilter strongly believes that musicians don't just need more knobs, faders or options on plug-ins: they need better sound quality and usability. That is why FabFilter creates easy-to-use yet powerful plug-ins, with innovative interfaces and superb sound quality, for a reasonable price.

FabFilter will expand their range of plug-ins in the future, supporting both Mac OS X and Windows, providing the best possible sound quality and filter designs. We hope that you will enjoy our products. Please feel free to contact us if you have any suggestions!

The FabFilter team

See Also

[Support](#)

[FabFilter web site](#)